

TRAY FORMER

MODEL TE-700-VF-SHOULDER TRAY

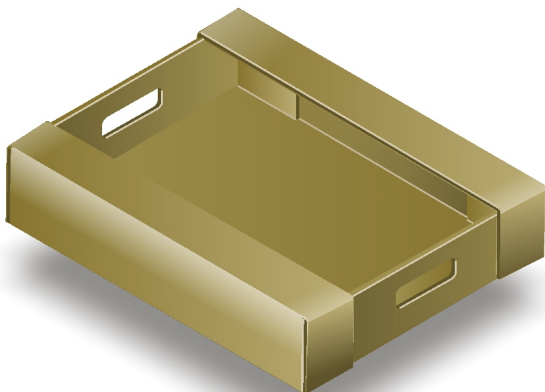


TE-700-VF-SH

Developed from the proven concept of the TE-700-VF. The machine randomly selects a blank, then forms and glues the four (4) inner corners and the outer shoulder flaps. It then presents the finished tray to the operator for hand-loading of the product or is discharged onto the customer's take-away conveyor.

Features & Benefits

- All welded heavy-duty construction
- Speed up to 22 TPM
- Transfer motion on hardened steel shafts and linear ball bearings
- Positive vacuum pull-down & blank transfer
- Rack-and-pinion style quick adjustment
- Sliding, electrically-interlocked Lexan® safety doors



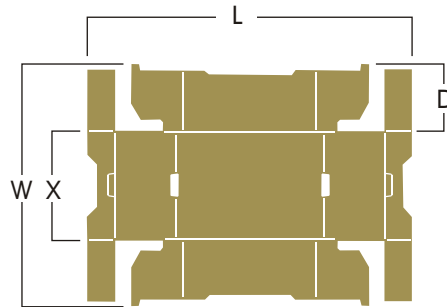
Features, Specifications, and Options subject to change without notice

550 NW 3 Avenue Florida City, FL 33034 Phone: 305.245.3045 Fax: 305.245.8057

SPMC © 2004 All rights reserved. Reproduction of this publication in whole or in part is strictly prohibited.

TRAY FORMER

MODEL TE-700-VF-SHOULDER TRAY



BLANK RANGE			
	L	W	D
MAX	22"(559mm)	30"(762mm)	6"(152mm)
MIN	16"(406mm)	23"(584mm)	3½"(89mm)
MAX X = 10" (254mm)			

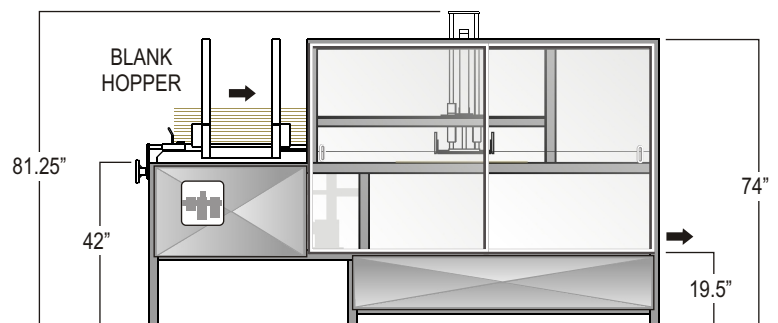
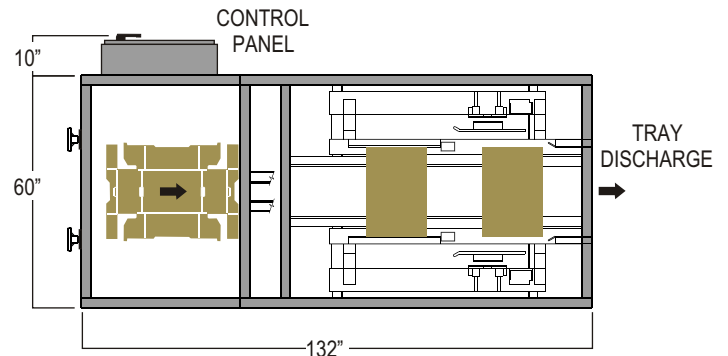
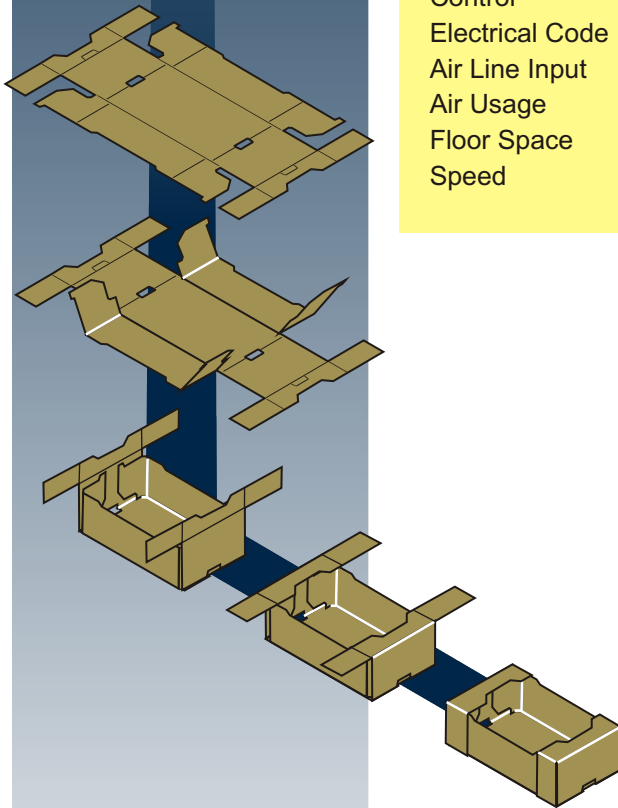
NOTE: For sizes above or below standard range consult manufacturer.

Specifications

Electrical	220 V / 3 phase / 60 hz
Control	24 V DC
Electrical Code	NEMA 12
Air Line Input	80 psi 1/2" NPT inlet
Air Usage	24 SCFM @ 22 TPM
Floor Space	11'-10" L x 3'-6" W x 6'-10" H
Speed	up to 22 TPM

Options

Stainless steel construction
Feed-on-demand circuitry
Horizontal power-fed auxiliary hopper (up to 8 feet)
Sizes above and below standard range
Special electrics



Features, Specifications, and Options subject to change without notice

550 NW 3 Avenue Florida City, FL 33034 Phone: 305.245.3045 Fax: 305.245.8057

SPMC © 2004 All rights reserved. Reproduction of this publication in whole or in part is strictly prohibited