

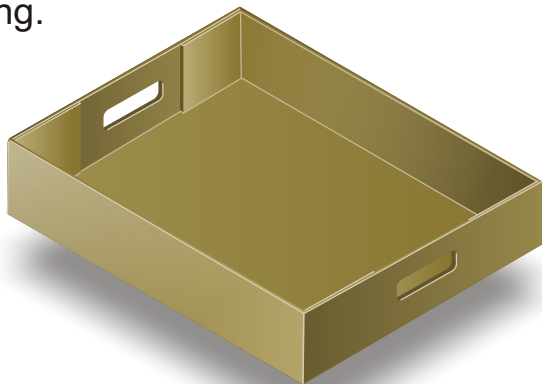
TRAY FORMER

MODEL TE-700-VF - HI-SPEED



TE-700-VF-HS

Model **TE-700-VF-HS** is a dependable, straightforward machine designed for around-the-clock performance. Simplified mechanic and pneumatic function offers reliable operation and easy maintenance. This Tray Former automatically selects and seals end-slotted trays. The machine produces a continuous flow of trays in the upright position for easy transfer and loading.



Features & Benefits

- All welded heavy-duty construction
- Speed up to 55 TPM
- Transfer motion on hardened steel shafts and linear ball bearings
- Positive vacuum pull-down & blank transfer
- Rack-and-pinion style quick adjustment

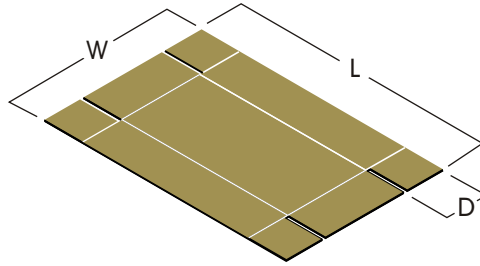
Features, Specifications, and Options subject to change without notice

550 NW 3 Avenue Florida City, FL 33034 Phone: 305.245.3045 Fax: 305.245.8057

SPMC © 2004 All rights reserved. Reproduction of this publication in whole or in part is strictly prohibited

TRAY FORMER

MODEL TE-700-VF - HI-SPEED



BLANK RANGE			
	L	W	D
MAX	30"(762mm)	22"(559mm)	4"(102mm)
MIN	15"(381mm)	12"(305mm)	2"(51mm)

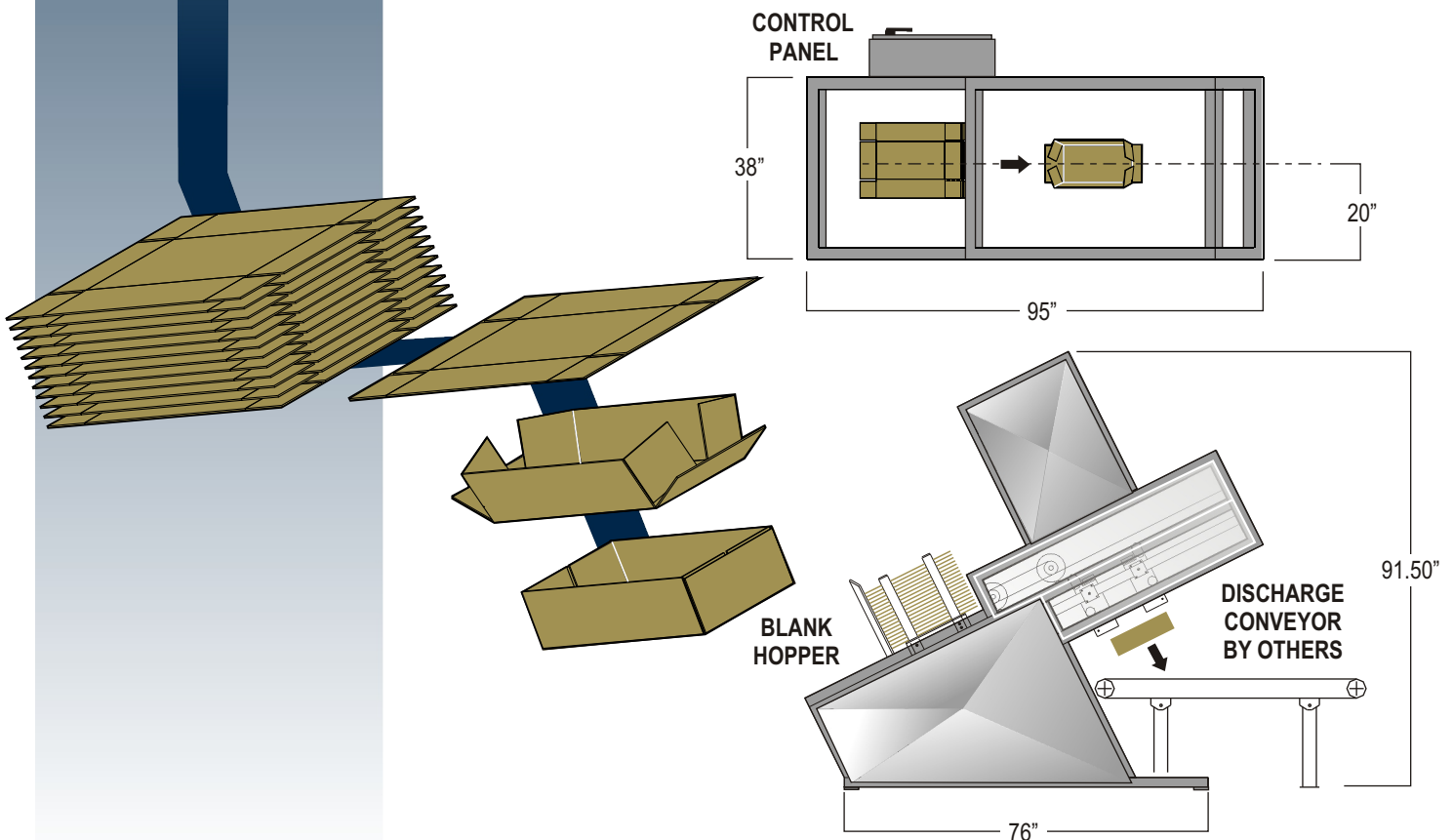
NOTE: For sizes above or below standard range consult manufacturer.

Specifications

Electrical	220 V / 3 phase / 60 hz
Control	24 V DC
Electrical Code	NEMA 12
Air Line Input	80 psi 1/2" NPT inlet
Air Usage	3 SCFM @ 55 TPM
Floor Space	7'-10" L x 3'-2" W x 7'-8" H
Speed	up to 55 TPM

Options

Stainless steel construction
Feed-on-demand circuitry
Horizontal power-fed auxiliary hopper (up to 8 feet)
Sizes above and below standard range
Special electrics



Features, Specifications, and Options subject to change without notice

550 NW 3 Avenue Florida City, FL 33034 Phone: 305.245.3045 Fax: 305.245.8057

SPMC © 2004 All rights reserved. Reproduction of this publication in whole or in part is strictly prohibited