

# TRAY FORMER

## MODEL TE-700 - 6 CORNER - HI-SPEED

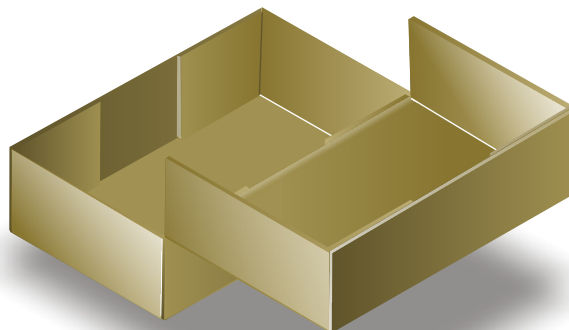


## TE-700-6C-HS

Developed from the proven concept of the TE-700-VF. The Tray Former selects a blank, then forms and glues all six (6) corners. It then presents the finished tray to the operator for hand-loading of the product or transfers the tray onto the customer's take-away conveyor. The machine's compact size requires a minimum of floor space and allows the operator to make up inventory as required.

## Features & Benefits

- All welded heavy-duty construction
- Speed up to 28 TPM
- Transfer motion on hardened steel shafts and linear ball bearings
- Positive vacuum pull-down & blank transfer
- Rack-and-pinion style quick adjustment
- Sliding, electrically-interlocked Lexan® safety doors



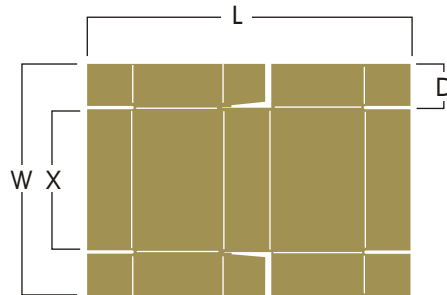
Features, Specifications, and Options subject to change without notice

550 NW 3 Avenue Florida City, FL 33034 Phone: 305.245.3045 Fax: 305.245.8057

SPMC © 2004 All rights reserved. Reproduction of this publication in whole or in part is strictly prohibited

# TRAY FORMER

## MODEL TE-700 - 6 CORNER - HI-SPEED



BLANK RANGE			
	L	W	D
MAX	42"(1067mm)	30"(762mm)	6"(152mm)
MIN	22"(558mm)	14"(356mm)	2"(51mm)
MAX X = 20" (518mm)			

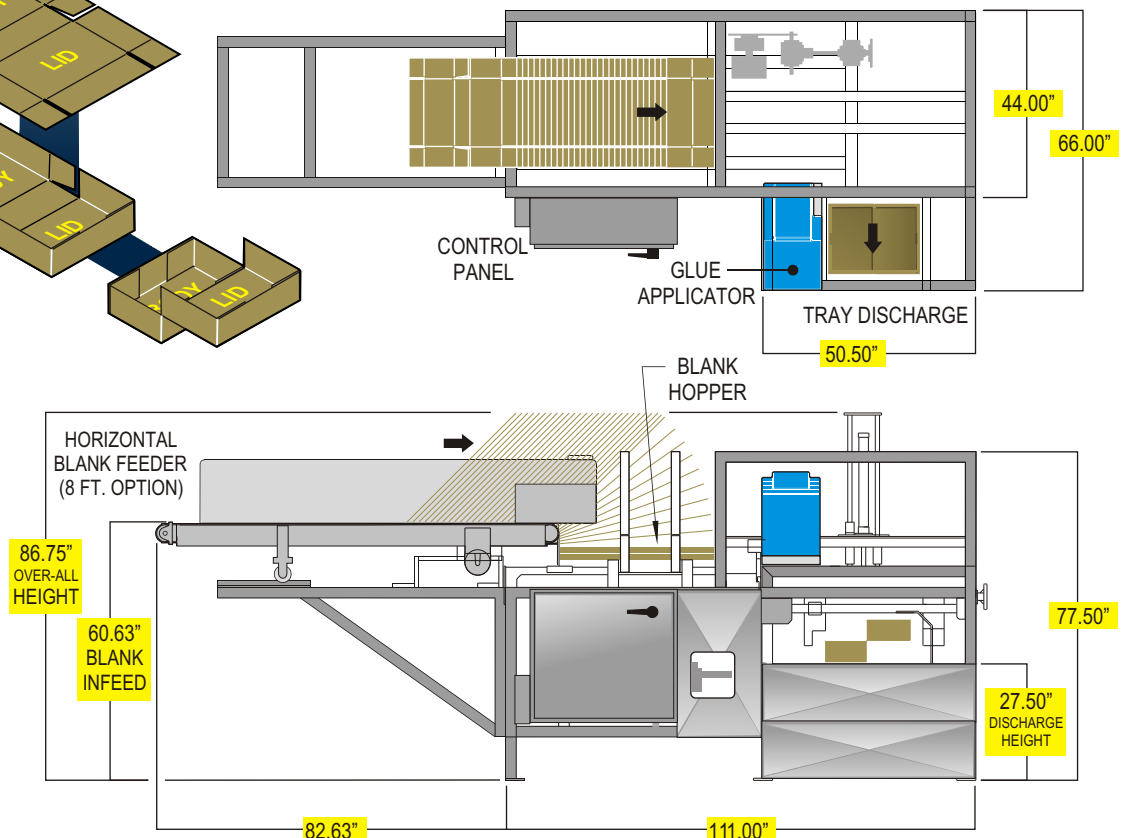
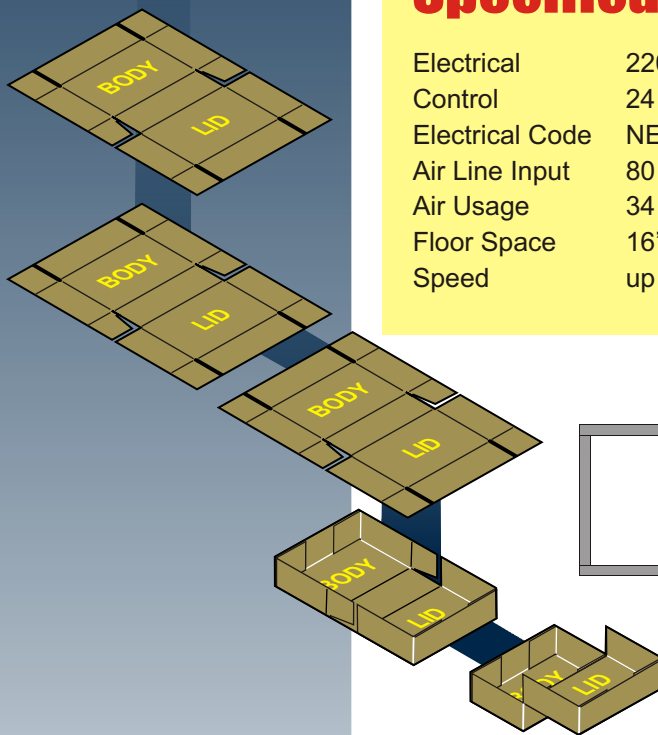
NOTE: Not all box dimensions can be combined

### Specifications

Electrical	220 V / 3 phase / 60 hz
Control	24 V DC
Electrical Code	NEMA 12
Air Line Input	80 psi 1/2" NPT inlet
Air Usage	34 SCFM @ 28 TPM
Floor Space	16'-2" L x 5'-6" W x 7'-3" H
Speed	up to 28 TPM

### Options

Stainless steel construction  
Feed-on-demand circuitry  
Horizontal power-fed auxiliary hopper (up to 8 feet)  
Sizes above and below standard range  
Special electrics



Features, Specifications, and Options subject to change without notice

550 NW 3 Avenue Florida City, FL 33034 Phone: 305.245.3045 Fax: 305.245.8057

SPMC © 2004 All rights reserved. Reproduction of this publication in whole or in part is strictly prohibited